

Separating Familial Mixtures, One Genotype at a Time

Northeastern Association of Forensic Scientists
November, 2014
Hershey, PA

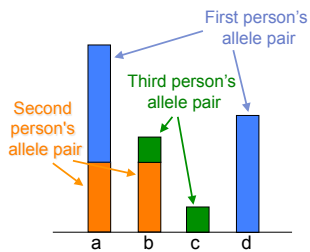
Ria David, PhD, Martin Bowkley, MS,
and Mark W Perlin, PhD, MD, PhD
Cybergenetics, Pittsburgh, PA



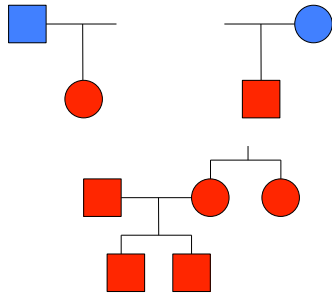
Cybergenetics

Cybergenetics © 2003-2014

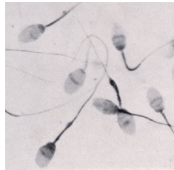
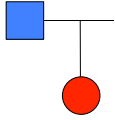
Relatives share alleles



Cybergenetics experience



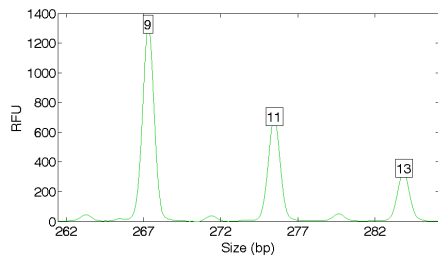
People of New York v Father of two daughters



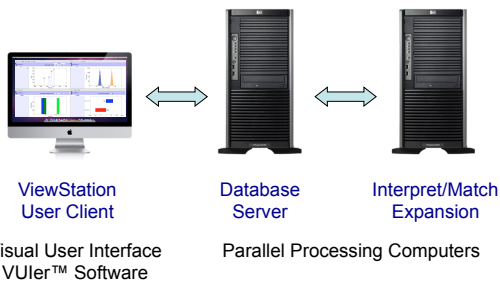
Five semen stains on a comforter

STR data

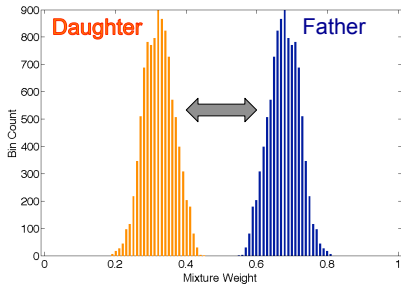
Quantitative peak heights at locus D16S539



TrueAllele® Casework

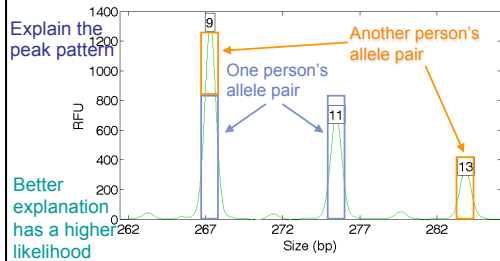


Mixture separation



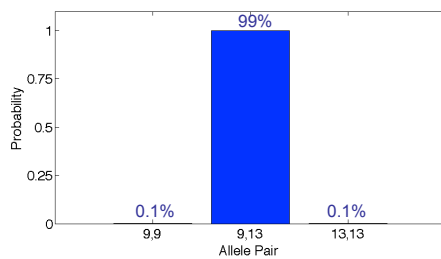
Genotype separation

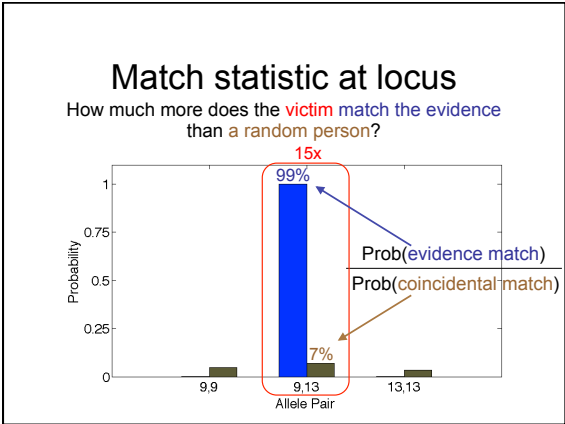
Consider every possible genotype solution



Minor genotype

Objective genotype determined solely from the DNA data.
Never sees a comparison reference.



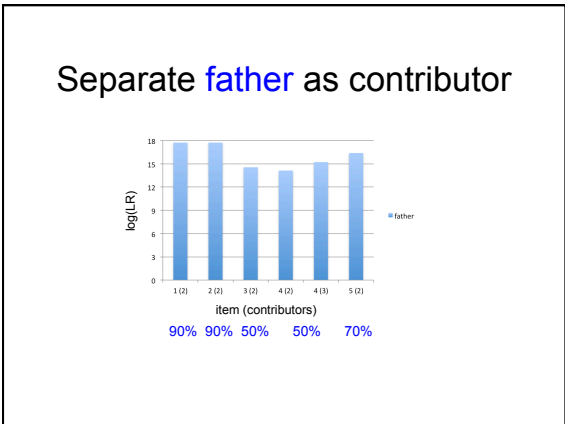


Reported match statistics

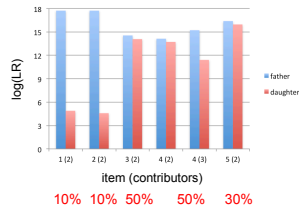
Multiply together the LR's at every locus

A match between the **comforter** and the **young girl** is **186 quadrillion** times more probable than coincidence

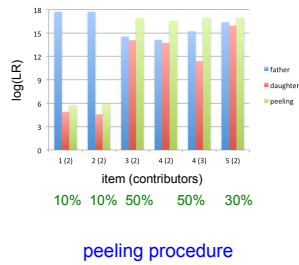
A match between the **comforter** and the **girl's father** is **33 quadrillion** times more probable than coincidence



Separate daughter as contributor



Assume father, separate daughter



Published validation papers

Perlin MW, Sinenikov A. An information gap in DNA evidence interpretation. *PLoS ONE*. 2009;4(12):e8327.

Ballantyne J, Hanson EK, Perlin MW. DNA mixture genotyping by probabilistic computer interpretation of binomially-sampled laser captured cell populations: Combining quantitative data for greater identification information. *Science & Justice*. 2013;53(2):103-14.

Perlin MW, Hornyak J, Sugimoto G, Miller K. TrueAllele® genotype identification on DNA mixtures containing up to five unknown contributors. *Journal of Forensic Sciences*. 2015;in press.

Greenspoon SA, Schiermeier-Wood L, Jenkins BC. Establishing the limits of TrueAllele® Casework: a validation study. *Journal of Forensic Sciences*. 2015;in press.

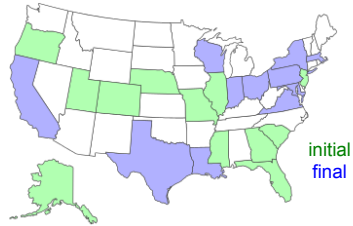
Perlin MW, Legler MM, Spencer CE, Smith JL, Allan WP, Belrose JL, Duceman BW. Validating TrueAllele® DNA mixture interpretation. *Journal of Forensic Sciences*. 2011;56(6):1430-47.

Perlin MW, Belrose JL, Duceman BW. New York State TrueAllele® Casework validation study. *Journal of Forensic Sciences*. 2013;58(6):1458-66.

Perlin MW, Dormer K, Hornyak J, Schiermeier-Wood L, Greenspoon S. TrueAllele® Casework on Virginia DNA mixture evidence: computer and manual interpretation in 72 reported criminal cases. *PLoS ONE*. 2014;(9)3:e92837.

TrueAllele in the United States

Laboratory systems or case reports in 23 states



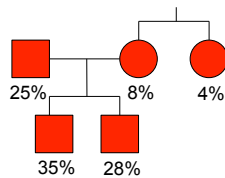
Court acceptance

- California
- Ohio
- Pennsylvania
- Virginia

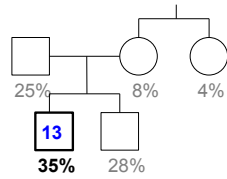
- United Kingdom
- Australia

Appellate precedent in Pennsylvania

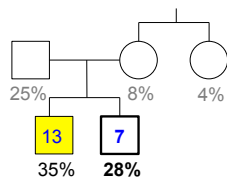
Separate out 5 relatives from a homicide mixture



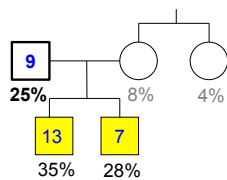
Infer 5 unknown genotypes:
match 35% contributor



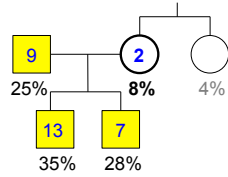
Assume 1 known, infer 4 unknown:
match 28% contributor



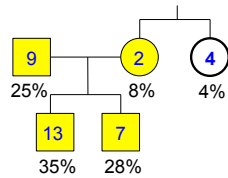
Assume 2 known, infer 3 unknown:
match 25% contributor



Assume 3 known, infer 2 unknown:
match 8% contributor



Assume 4 known, infer 1 unknown:
match 4% contributor



More information

<http://www.cybgen.com/information>

- Courses
- Newsletters
- Newsroom
- Patents
- Presentations
- Publications
- Webinars



<http://www.youtube.com/user/TrueAllele>
TrueAllele YouTube channel



Cybergenetics



martin@cybgen.com
