

#3. Hair evidence




Roosevelt Glenn case



DNA analysis
H







Match table 3

References

	V	P	Glenn
 J	-15.39	-18.00	-15.39
 S	-15.39	-15.17	-15.39
 H	-15.39	-18.00	-15.39

Evidence vs. evidence

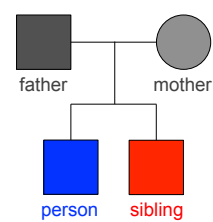
Different evidence genotypes?

	 J	 S	 H
 J	11.07	1.21	4.15
 S	1.21	10.22	-2.39
 H	4.15	-2.39	10.31

Similar genotypes



Kinship analysis






Sibling vs. evidence

sibling of	J	S	H
J	6.67	4.85	5.08
S	4.70	6.01	3.34
H	5.78	4.18	5.55

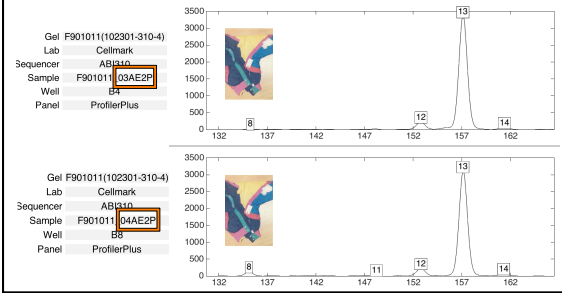
XY male genotype, so three brothers

Match table 3





		References					
		V	P	G	J	S	H
	J	-15.39	-18.00	-15.39	11.07	1.21	4.15
	S	-15.39	-15.17	-15.39	1.21	10.22	-2.39
	H	-15.39	-18.00	-15.39	4.15	-2.39	10.31

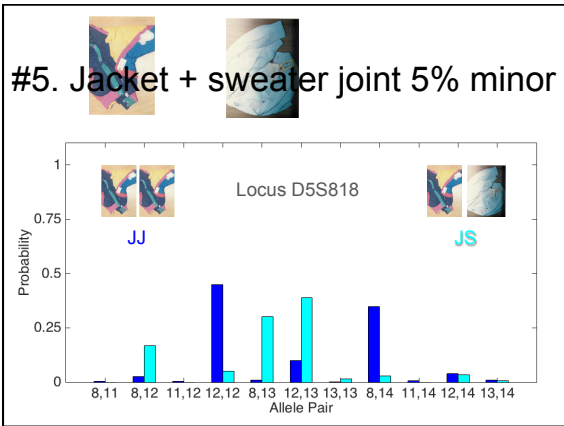
#4. Joint jacket 10% minor

Examine multiple experiments simultaneously



Match table 4

		References						
		V	P	G	J	S	H	JJ
	J	-15.39	-18.00	-15.39	11.07	1.21	4.15	-6.19
	S	-15.39	-15.17	-15.39	1.21	10.22	-2.39	-5.81
	H	-15.39	-18.00	-15.39	4.15	-2.39	10.31	-3.52
	JJ	-2.78	-8.50	-8.43	-6.19	-5.81	-3.52	7.05



Match table 5

References:

	V	P	G	J	S	H	JJ	JS
J	-15.39	-18.00	-15.39	11.07	1.21	4.15	-6.19	-7.66
S	-15.39	-15.17	-15.39	1.21	10.22	-2.39	-5.81	-8.09
H	-15.39	-18.00	-15.39	4.15	-2.39	10.31	-3.52	-5.80
JJ	-2.78	-8.50	-8.43	-6.19	-5.81	-3.52	7.05	-1.49
JS	-10.47	-5.79	-12.60	-7.66	-8.09	-5.80	-1.49	8.06

TrueAllele Pinkins findings

1. compared *evidence with evidence*
2. calculated *exclusionary match statistics*
3. revealed *5% minor mixture contributor*
4. *jointly analyzed DNA mixture data*
5. showed three perpetrators were *brothers*

found 5 unidentified genotypes,
defendants not linked to the crime

Search CODIS?
